



The Isle of Wight
College

Your Future Starts Here



COLLEGE GUIDE

iwcollege.ac.uk

WELCOME TO THE ISLE OF WIGHT COLLEGE

School Leavers

Transitioning from school to college is an exciting step towards independence and learning more about subjects you're passionate about. At The Isle of Wight College, we offer comprehensive courses at Levels 1, 2, 3, 4 and 5 to cater to students coming directly from school.

Whether you are looking to build foundational knowledge, enhance skills, or prepare for further education, our courses are designed to provide structured pathways that support your academic and career ambitions.

Lifelong Learning Opportunities

The Isle of Wight College is not just for school leavers; we provide a wide range of courses and programs tailored for adult learners looking to up-skill, re-skill, or embrace a new career path.

Whether you're returning to education after a break, seeking professional development, or wanting to explore a new interest, our adult education programs are designed with flexibility and support in mind. From evening and weekend courses to online learning options, we ensure that education is accessible to everyone, regardless of their stage in life or previous educational background. You can explore our apprenticeships, professional qualifications, and short courses to find the perfect fit for your learning journey.

Pathways at Isle of Wight College

Pathways provide a supportive educational route for students up to age 25 with an EHCP, focusing on independence and study skills through classroom and vocational learning.

The program supports students with special educational needs or anxiety, offering progression to higher levels or employment. Find out more: iwcollege.ac.uk/course-areas/pathways



T-Levels:

Upon successful completion, T-Levels are equivalent to 3 A Levels, combining classroom learning with practical experience through substantial industry placements.

T-Levels are designed in partnership with employers, providing valuable insight into various careers, ensuring the skills you learn are both relevant and highly valued in the workplace.

The Isle of Wight College now offer ten T-Level courses, with more anticipated in the next academic year. New for this coming year is Marketing.

The Foundation Learning

These courses are designed for students aged 16–19 without formal qualifications, focusing on building confidence and practical skills. The curriculum includes English, Maths, personal development, and vocational tasters, preparing students for further education or entry-level employment.

University Centre Isle of Wight

University courses provide a pathway for those seeking higher education, offering a chance to pursue degrees and expand their academic horizons.

Apprenticeships

Apprenticeships are available to adults as well as young people, giving the opportunity to train and earn at the same time. The Isle of Wight College offer the broadest range of apprenticeships on the Island.

University Centre Isle of Wight

University courses provide a pathway for those seeking higher education, offering a chance to pursue degrees and expand their academic horizons.

Access to Higher Education

Access to Higher Education (HE) programmes facilitate the transition for adults aiming for university by providing a bridge to develop necessary skills.

Engineering

Engineering enthusiasts can explore specialised courses tailored to industry demands. These are all based at our dedicated engineering facility, CECAMM in Whippingham.

Short courses

For those with time constraints, short courses offer a quick and focused way to acquire new skills. These can be courses for leisure or courses or endorsements that will enhance your workplace skillset, contributing toward progression in your career.

Full-time and part-time courses

These can cater to varied schedules, ensuring flexibility for adult learners. Funding opportunities make education more accessible, easing financial constraints that may hinder pursuit of knowledge.

Maths and English as an adult

The Isle of Wight College recognises the importance of key skills. Adults can enhance their mathematics and English proficiency through Functional Skills & GCSE programmes, Multiply numeracy courses or refresher courses. The college's commitment to accommodating diverse needs fosters a supportive environment for adult learners seeking to thrive in their educational endeavours.



This booklet will guide you through your options check out the back pages for how to apply...

CAREERS GUIDANCE

OUR CAREERS ADVISOR – YOUR FRIENDLY GUIDE TO CAREERS AND OPPORTUNITIES

Deciding on your next steps can be challenging, but that's why our dedicated Careers Advisor is here to help you every step of the way! Bringing years of experience to the role, our Careers Advisor provides guidance to students, adults, and anyone interested in expanding their opportunities.

How Our Careers Advisor Can Help You

Our Careers Advisor is ready to support you with independent, impartial advice tailored to your personal goals and needs. Here's how they can help:

- **Higher Education and Employment Guidance:** They can provide valuable insight on your next steps, from university applications and UCAS to finding a career pathway that's just right for you.
- **CV and Application Support:** Need a CV that stands out? Our Careers Advisor offers one-on-one advice to make sure your CV and job applications reflect your strengths and skills.
- **Apprenticeship Advice:** Thinking about an apprenticeship? They can guide you through available options, finding a role that suits your career aspirations.
- **Funding Support:** Applying for higher education funding? They can walk you through the process, ensuring you know your options and deadlines.

How to Connect with Our Careers Advisor

Booking an appointment is easy! You can use our online booking form here: <https://iwcollege.ac.uk/support/advice-guidance> or, if you're already on campus, stop by admissions or reception. You can also call directly at 01983 550601 for a chat or to set up an appointment.

For general careers advice, you can also reach out to the National Careers Service at 0800 100 900.

BOOK YOUR APPOINTMENT WITH OUR ADVISOR >



TAKE OUR CAREERS QUIZ



AREAS OF STUDY A-Z

The Isle of Wight College offers a diverse array of study programs designed to cater to various interests and career paths. Students can explore traditional and vocational disciplines ranging from Science, Engineering, and Computing & Digital, to more creative and skill-focused areas like Fashion or Commercial Music with Platform One, and Graphic and Digital Design. For those interested in health and social services, courses are available in Health and Social Care, Childhood Studies, and Beauty and Complementary Therapies. The college also provides programs in Business, Management, and Accounting for those aiming for corporate careers.

Additionally, the curriculum includes practical courses in Hospitality and Catering, Media, TV and Film Production, and Performing Arts, allowing students to gain hands-on experience in their chosen fields. Those interested in physical education or leadership can pursue courses in Sport & Fitness or Activities Leadership with UKSA.

A significant number of the Island's tradespeople, from electricians and plumbers to carpenters and bricklayers, develop their essential skills at The Isle of Wight College. The college's comprehensive vocational programs blend theoretical knowledge with practical training, preparing students to excel in various skilled trades and support the local economy.

The college also addresses the needs of those aiming for careers in public services or tourism with programs in Uniformed Public Services and Travel and Tourism, ensuring a comprehensive educational environment that aligns with both industry demands and personal aspirations.

AREAS OF STUDY A-Z

Access to Higher Education



Tailored for those aiming to pursue university studies, these courses provide foundational knowledge and skills across various subjects, serving as a bridge to higher education.

Activities Leadership



Delivered by UKSA, you can develop leadership abilities and organisational skills through engaging activities, preparing for roles in community projects, sports coaching, and event management.

Adult Skills



Enhance your career prospects or explore new interests with courses focused on practical skills, personal development, and lifelong learning opportunities.

Animal Management & Care **T-LEVELS** THE NEXT LEVEL QUALIFICATION



Immerse yourself in animal welfare, care, and management. Ideal for those interested in careers within veterinary services, wildlife conservation, or animal care roles.



AREAS OF STUDY A-Z

Art & Design



Unleash your creativity with diverse mediums, from painting and sculpture to digital design, equipping you for careers in the fast-paced art and design sectors.

Beauty & Complimentary Therapies



Gain expertise in cosmetology, holistic therapies, and spa treatments, setting you up for rewarding roles in salons, spas, and wellness centres.

Brickwork

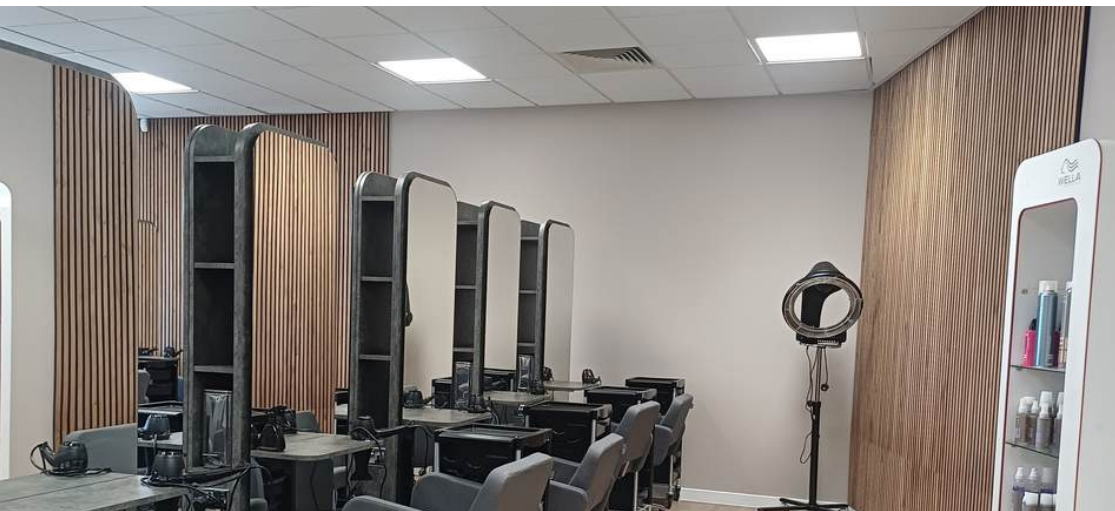


Learn the foundational skills of bricklaying and masonry, offering a practical pathway into the thriving construction industry with a hands-on approach.

Business, Management & Marketing



Covering everything from business operations to financial management, leadership and marketing, prepare yourself for dynamic careers in the corporate world or as an entrepreneur.



AREAS OF STUDY A-Z

Carpentry & Joinery



Master woodworking and joinery techniques, opening doors to careers in construction, furniture making, and bespoke projects in restoration.

Childhood Studies



Focus on child development and education practices, preparing you for fulfilling roles in early years education, childcare, and support services.

Commercial Music



Dive into the music industry at Platform One, with a focus on performance, production, and business skills.

Computing & Digital



Prepare for the digital age with courses in IT, software development, esports and digital media, equipping you for high-demand roles in technology-driven industries.



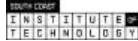
AREAS OF STUDY A-Z

Electrical



Gain qualifications in electrical installation, maintenance, and safety, recognised by the industry and paving the way for careers in electrical engineering.

Engineering



Comprehensive courses across mechanical, electrical, and marine engineering delivered at our dedicated state-of-the-art campus; CECAMM. Preparing you for diverse roles within the engineering field.

Fashion



Explore fashion design, textiles, and merchandising, gaining hands-on experience for roles in the ever-evolving fashion industry.

Graphic & Digital Design



Develop skills in visual communication, branding, and digital media, setting the stage for creative careers in design and advertising.



AREAS OF STUDY A-Z

Hairdressing



Train in cutting, styling, and colouring techniques with real-world practice in our stunning new salons, readying you for a successful career in the hair industry.

Health & Social Care



Prepare for meaningful roles in health and social care sectors, focusing on patient care, support, and promoting well-being in the community.

Horticulture



Gain practical experience in plant cultivation, landscaping, and environmental conservation, fostering skills to work in sustainable and green industries.

Hospitality & Catering



Learn culinary arts, hospitality management, and customer service, preparing you for careers in the dynamic and thriving food service sector.



Areas of Study A-Z

Media, TV & Film Production

T-LEVELS
THE NEXT LEVEL QUALIFICATION



Step into the world of media production with courses covering film, television, and digital content creation. This area has recently seen an incredible investment thanks to T-Levels & has phenomenal, industry-standard studios.

Motor Vehicle



Acquire practical skills in vehicle maintenance, diagnostics, and repair, leading to career opportunities in the automotive sector. Now including EV (Electric Vehicle) training with our dedicated rig & electric cars.

Painting and Decorating



Learn the techniques of painting, decorating, and interior design, paving the way for careers in the construction and home improvement sectors.

Performing Arts



Explore drama, dance, and theatre production, fostering your talents for a career in the performing arts industry.



Areas of Study A-Z

Photography



Develop expertise in digital and traditional photography, with a focus on composition, editing, and storytelling through images.

Plumbing & Gas



Learn practical skills in plumbing, gas safety, and installation, with qualifications recognised in the heating and plumbing industries. Our plumbing department has recently had an impressive upgrade thanks to the T levels fund.

Science



Engage with subjects like biology, chemistry, and environmental science, developing analytical skills suited for various scientific careers.

Sport & Fitness



Fuel your passion for health and fitness in a state-of-the-art environment equipped with our on-site gym.



Areas of Study A-Z

Travel & Tourism



Immerse yourself in the exciting world of travel and tourism, an industry that opens doors to global career opportunities. Courses cover essential skills in customer service, destination management, marketing, and event planning.

Uniformed Services



Step into a rewarding career in public service with our courses in uniformed services, which provide insight into roles within the police, fire service, military, border security, and more.



ENGINEERING AT CECAMM

CECAMM is the Island's Centre of Excellence for Composites, Advanced Manufacturing and Marine, offering young people and employers the industry skills they need for now and the future - built in conjunction with local and international engineering employers

Engineering

CECAMM is the Centre of Excellence for Composites, Advanced Manufacturing and Marine (CECAMM), it is part of the Isle of Wight College and located in Whippingham (East Cowes).

We offer a dynamic range of engineering and manufacturing courses for both adult learners and school leavers. The state-of-the-art facilities have recently seen huge investment in a new extension, thanks to the South Coast Institute of Technology, enhancing our educational offerings with over £13 million in funding across the partnership. Course currently available at CECAMM include:

Foundation

- Engineering Level 1 Certificate (Full Time)
- Welding Level 1 (Adult Skills Builder Certificate, Part Time)

Intermediate

- Engineering Operations Level 2 (Full Time)
- Engineering - Marine Level 2 (Full Time)

Advanced

- Engineering T-Level - Design And Development For Engineering And Manufacturing (Level 3, Full Time)
- Engineering Technician Apprenticeship (Level 3, Full Time)

Higher Education

- Engineering - Mechanical (HNC, Level 4, Part Time)
- Engineering - Electrical (HNC, Level 4, Part Time)
- General Engineering (HND, Level 5, Part Time)

As a student at CECAMM you will benefit from:

Industry Collaboration:

We collaborate with top firms like BAE Systems, GKN, Wight Shipyard, Britten-Norman, and Vestas to ensure our courses meet industry standards and provide valuable career pathways.

South Coast Institute of Technology:

This collaboration among local further education colleges and universities focuses on addressing skills shortages in engineering and manufacturing, ensuring our courses are directly aligned with the needs of the industry.

Explore New Opportunities:

Whether you're starting out or looking to upgrade your skills, CECAMM provides a learning environment that combines practical experience with theoretical knowledge, making you workforce-ready.



T-LEVELS

Upon successful completion, T-Levels are equivalent to 3 A Levels, combining classroom learning with practical experience through substantial industry placements.

They are designed in partnership with employers, T-Levels provide valuable insights into various careers, ensuring the skills you learn are both relevant and highly valued in the workplace.



T-LEVELS

THE NEXT LEVEL QUALIFICATION

T-LEVELS

THE NEXT LEVEL QUALIFICATION

Quick info:

- T-Levels are an alternative to A-levels, designed to prepare you for work, further training, or study.
- They combine classroom learning with a substantial industry placement, lasting approximately 45 days.
- T-Levels are equivalent to 3 A-levels and are recognised by universities and employers.
- They focus on vocational skills in industries like digital, construction, education, and healthcare.
- Upon completion, you can progress into skilled employment, higher apprenticeships, or higher education.

Which Areas of Study Currently Offer T-Levels?

- Management & Administration
- Marketing
- Engineering
- Health
- Early Years & Education (Childcare)
- Building Services (Gas Engineer)
- Media Broadcast & Production
- Animal Care & Management
- Computing & Digital
- Education and Early Years



APPRENTICESHIPS

Being an apprentice gives you the opportunity to gain a recognised qualification and develop professional skills, while earning a salary, inside some of Britain's best companies, both locally and nationally.

Visit the [Isle of Wight College website](#) now for study information, including our frequently asked questions.

APPRENTICESHIPS

GAIN A RECOGNISED
QUALIFICATION AND DEVELOP
PROFESSIONAL SKILLS, WHILE
EARNING A SALARY,

Quick info:

- There is NO maximum age limit to becoming an apprentice.
- You can study on the job with your existing employer with their help.
- You DON'T HAVE TO PAY to be an apprentice.
- Employers will pay you a minimum of £6.40ph, but many pay higher.



What sectors could I work in?

- Brickwork (L2)
 - Business Administration (L3)
 - Beauty Therapist (L2)
 - Carpentry & Joinery (L2 & L3)
 - Chef de Partie (L3)
 - Commis Chef (L2)
 - Early Years Practitioner (L2)
 - Early Years Educator (L3)
 - Children, Young People & Families Practitioner/Manager (L4/L5)
 - Customer Service (L2 & L3)
 - Electrical Installation (L3)
 - Engineering (L2, L3 & L4)
 - Hairdressing (L2 & L3)
 - Health and Social Care (L2, L3 & L4)
 - Horticulture (L2)
 - Information Communication Technician (L3)
 - Hospitality Team member (L2)
 - Human Resources (L3 & L5)
 - Management (L5)
 - Motor Vehicle (L2 & L3)
 - Painting and Decorating (L2)
 - Play Worker (L2)
 - Plumbing (L3)
 - Project Management (L4)
 - Property Maintenance (L2)
 - Retail (L2)
 - School Business Professional (L4)
 - Supply Chain Warehousing (L2)
 - Teaching Assistant (L3)
 - Team Leading (L3)
- Aeronautical
-Mechanical
-Composites
-Marine
-Electronic

>>> Level is indicated in brackets i.e (L1) (L2) (L3) (L4) (L5)

For more information, email: apprenticeships@iwcollege.ac.uk

ACCESS TO HIGHER EDUCATION

The Access to Higher Education Diploma is nationally recognised as a university entrance qualification.

The programme is designed for adult learners who come from a broad age range and varied backgrounds. If you progress onto university then your fees are usually non-repayable for your access course*.

***Subject to eligibility criteria**

ACCESS TO HIGHER EDUCATION

BE QUALIFIED TO ENTER UNIVERSITY IN JUST 9 MONTHS!

Explore and Progress

It's never too late to learn something new! If you want to find a way into higher education, boost your career, or just learn a new hobby for fun.



Aiming to go to university?

In just nine months (September – June) you could be qualified to enter university and progress to that exciting new career with an Access to Higher Education course.

Top Quality Support

For an adult learner we recognise that returning to education can be a bit daunting but we have a fantastic team of staff to help ease you back into college life.

You can start your journey to higher education in the following areas with us:

- Art & Design, Graphics and Photography
- Social Science
- Paramedic Science
- Engineering Science
- Humanities
- Childhood Studies
- Health and Social Care
- Allied Health Professions
- Primary Teaching
- Nursing and Midwifery

Alumni

“Hello everyone, it’s Alex. I studied on the access course 3 years ago. I wanted to let you how that I have completed my nursing degree and was fortunate to get a first. An unexpected outcome given I was 14 UCAS points under the requirement for the course. I have a job lined up in critical care at St Mary’s. I wanted to thank you for all the help you gave me. I would not be in this position without you.”

Alex, former Access to HE student

UNIVERSITY CENTRE ISLE OF WIGHT

Are you ready to kickstart a new career or progress in your current one with a higher level qualification awarded by the University of Portsmouth?

UNIVERSITY CENTRE ISLE OF WIGHT



STAY LOCAL, GO FAR

Why Choose UCIOW for Your Higher Education?

Exceptional Learning Experience

At UCIOW, you'll thrive in a supportive and inspiring environment led by highly qualified and experienced lecturers. Our Higher Education courses are designed to deliver a first-class learning experience that helps you achieve your full potential.

Outstanding Career Progression

UCIOW offers university-level education with a strong focus on career advancement. Whether you're aiming to enter a new profession, climb the career ladder, or pursue further studies, our Higher Education courses provide the ideal springboard for success.

Affordable, High-Quality Qualifications

Our affordable and locally accessible programmes eliminate the need for costly travel or relocation, allowing you to focus on gaining the skills and qualifications that will set you apart in your chosen field.

Industry-Validated Courses

Our courses are rigorously validated and quality assured by leading regional universities and professional bodies. This ensures you graduate with qualifications that meet high academic standards and are valued by employers. With our close connections to business and industry, you'll benefit from excellent employment prospects and career opportunities.

Flexible Study Options

Choose from a range of study options to suit your goals and lifestyle. Whether you're looking for a full-time Foundation Degree (FdA) or Higher National Diploma (HND), or prefer part-time study with a Higher National Certificate (HNC) or HND, we have the right course for you.

Take the next step in your career journey and join the thriving learning community at UCIOW, where your potential becomes reality.

Courses Available:

- Engineering – Mechanical HNC and HND L4/L5
- Engineering – General HND L5
- Computing HTQ and HND L4/L5
- Early Years Care and Education FdA L5
- Education – Early Years FdA L5
- Certificate in Education (Cert Ed) L5
- PGCE in Post Compulsory Education and Training L6
- Business BA Top-Up in Education & Early Years L6



ENGLISH, MATHS, ESOL & GCSE

Our Maths and English courses span from Entry Level to GCSE, designed to help you gain the qualifications and confidence needed in these crucial subjects.

For adult learners seeking to study independently and post-16 students needing to retake their GCSEs, our structured programs ensure that everyone can fit these essential studies into their schedules.

Additionally, for those requiring language support, our English for Speakers of Other Languages (ESOL) courses range from beginner to Level 2, aimed at enhancing your English communication skills through speaking, listening, reading, and writing.

We also offer Biology GCSE as part of our extended curriculum to provide a broader educational opportunity.

MATHS & ENGLISH

(FUNCTIONAL SKILLS AND GCSE)

We offer a comprehensive range of English and Maths courses tailored to meet the needs of every learner, regardless of their life commitments such as work or family. Mastery of English not only broadens your academic options but also makes you more desirable to employers, significantly enhancing your career prospects.

GCSEs in English and Maths are crucial for accessing higher education and are often a prerequisite for various job applications. If you haven't yet achieved a grade of A–C or 4 or above, or if you've never taken these GCSEs, our educational programs are designed to support you.

Adult learners have the flexibility to study at their own pace, while those under 16 benefit from having Maths and English seamlessly incorporated into their weekly schedules.

This structured approach provides ample support, helping students to successfully obtain these key qualifications.

By offering comprehensive maths courses, we ensure that students develop a strong numerical foundation, critical thinking skills, and analytical abilities. Whether you're recalculating budgets, measuring materials on a job site, or analysing data trends, maths is an indispensable tool.

When you apply for one of these courses, our team will conduct an initial assessment to help you select the most suitable level and schedule that fits your lifestyle.

Importantly, these courses are offered free of charge to anyone who does not already have a GCSE or O Level at grade 4/C or equivalent, ensuring that everyone, regardless of their employment status, has the opportunity to advance their education.



To find out more visit iwcollege.ac.uk or email info@iwcollege.ac.uk

ENGLISH

COURSES, DATES AND TIMES (ADULT)

Functional Skills	Hours	Weeks	Day	Start	Time
September Start					
Functional Skills English L2	60	30	Thursday (AM) Thursday (PM)	15/09/2025	09:30-11:30 17:30-19:30
Functional Skills English L1	60	30	Thursday (AM) Thursday (PM)	15/09/2025	09:30-11:30 17:30-19:30
Functional Skills English E3	60	30	Thursday (AM) Thursday (PM)	15/09/2025	09:30-11:30 17:30-19:30

September start also available for Functional Skills.

GCSE	Hours	Weeks	Day	Start	Time
September Start					
English (GCSE)	102	34	TBC	08/09/2025	TBC

MATHS

COURSES, DATES AND TIMES (ADULT)

Maths	Hours	Weeks	Day	Start	Time
September Start					
Functional Skills Maths L2	60	30	Tuesday (AM) Wednesday (PM)	15/09/2025	09:30-11:30 17:30-19:30
Functional Skills Maths L1	60	30	Tuesday (AM) Wednesday (PM)	15/09/2025	09:30-11:30 17:30-19:30
Functional Skills Maths E3	60	30	Tuesday (AM) Wednesday (PM)	15/09/2025	09:30-11:30 17:30-19:30

September start also available for Functional Skills.

GCSE	Hours	Weeks	Day	Start	Time
September Start					
Maths (GCSE)	102	34	TBC	08/09/2025	TBC

ESOL

ENGLISH FOR SPEAKERS OF OTHER LANGUAGES

The Isle of Wight College is the leading ESOL provider on the Isle of Wight, and our courses are designed to enhance your communication skills with others.

We offer classes that allow you to study flexibly around your other commitments.

If you decide to apply for one of these courses, you'll be invited to an initial assessment session where our team will assist you in selecting the right course for your needs including access to employability skills sessions.

To schedule your assessment, please reach out to us directly at 01983 526631 or via email at esol.course@iwcollege.ac.uk



ESOL	Hours	Weeks	Day	Start	End	Time
Reading						
ESOL Reading LV1	40	10	Monday Tuesday	24/02/2025 25/02/2025	16/05/2025	13:00-15:00 13:00-15:00
ESOL Reading LVE1	40	10	Monday Tuesday	24/02/2025 25/02/2025	16/05/2025	13:00-15:00 13:00-15:00
ESOL Reading LVE2	40	10	Monday Tuesday	24/02/2025 25/02/2025	16/05/2025	13:00-15:00 13:00-15:00
ESOL Reading LVE3	40	10	Monday Tuesday	24/02/2025 25/02/2025	16/05/2025	13:00-15:00 13:00-15:00

ESOL

COURSES, DATES AND TIMES

ESOL	Hours	Weeks	Day	Start	End	Time
Writing						
ESOL Writing LV1	40	10	Monday Tuesday	24/02/2025 25/02/2025	16/05/2025	13:00-15:00 13:00-15:00
ESOL Writing LVE1	40	10	Monday Tuesday	24/02/2025 25/02/2025	16/05/2025	13:00-15:00 13:00-15:00
ESOL Writing LVE2	40	10	Monday Tuesday	24/02/2025 25/02/2025	16/05/2025	13:00-15:00 13:00-15:00
ESOL Writing LVE3	40	10	Monday Tuesday	24/02/2025 25/02/2025	16/05/2025	13:00-15:00 13:00-15:00
Speaking and Listening						
ESOL Speaking and Listening LV1	40	10	Monday Tuesday	24/02/2025 25/02/2025	16/05/2025	13:00-15:00 13:00-15:00
ESOL Speaking and Listening LVE3	40	10	Monday Tuesday	24/02/2025 25/02/2025	16/05/2025	13:00-15:00 13:00-15:00
ESOL Speaking and Listening LVE1	40	10	Monday Tuesday	24/02/2025 25/02/2025	16/05/2025	13:00-15:00 13:00-15:00
ESOL Speaking and Listening LVE2	40	10	Monday Tuesday	24/02/2025 25/02/2025	16/05/2025	13:00-15:00 13:00-15:00
Employability Skills*						
ESOL Employability Skills	15	10	Tuesday	25/02/2025	16/05/2025	15:00-16:30

SKILLUP COURSES

Enhance your professional portfolio with our SkillUp courses, designed to refine existing talents, introduce new skills, or ignite a new interest. Whether you're returning to the workforce or shifting your career path, our diverse offerings cover a range of practical and creative fields.

Dive into Plumbing, Motor Vehicle Skills, Budgeting, Heating Essentials, and Plastering for hands-on expertise. Explore Sustainable Subjects to adapt to eco-friendly practices, or delve into the creative realms of Interior Design and Spanish. These courses are perfect for those looking to start anew or advance in a chosen career, combining enjoyment with essential skill development.

If you are unemployed or earning less than £25,000 a year the tuition for the course is FREE* If you are employed and earning more than £25,000 a year you will need to pay the tuition fee set.

** There may also be a material fee set against some courses on top of the tuition fee, ALL students need to pay this in addition to any tuition fee, but there may be financial support available through the adult bursary scheme. Prospective students must meet DfE residency criteria.*

CREATIVE SKILLS

Unlock your creative potential with our diverse range of part-time courses! Dive into Photography, from beginner to advanced levels, craft unique Sustainable Jewellery, explore the fundamentals of Interior Design, and discover the art of Puppetry.

Each course is designed to inspire, challenge, and enhance your artistic skills.



SkillUp	Hours	Weeks	Day	Start	Time
Introduction to Photography	24	12	Wednesday	January	18:00-20:00
Introduction to Photography	24	12	Wednesday	April	18:00-20:00
Advanced Photography	24	12	Wednesday	January	18:00-20:00
Advanced Photography	24	12	Wednesday	April	18:00-20:00
Creative Sustainable Jewellery	24	12	Thursday	January	18:00-20:00
Creative Sustainable Jewellery	24	12	Thursday	April	18:00-20:00
Interior Design - Foundation for Beginners	24	12	Wednesday	January	18:00-20:00
Introduction to Puppetry	24	12	Wednesday	January	18:00-20:00

CREATIVE SKILLS

DAYTIME COURSES

Delve into the creative arts with our daytime SkillUp courses.

Whether you're a budding photographer or an aspiring artist, these courses are tailored to enrich your creative journey at times to suit your lifestyle.



SkillUp	Hours	Weeks	Day	Start	Time
Explore Photography – Capture the World Through Your Lens	10	5	Thursday	January	10:00–12:00
Explore Photography – Capture the World Through Your Lens	10	5	Thursday	January	10:00–12:00
Photography: Explore & Develop Your Creative Vision	20	10	Thursday	April	10:00–12:00
Discover Printmaking – Unleash Your Inner Artist	10	5	Thursday	January	10:00–12:00
Discover Printmaking – Unleash Your Inner Artist	10	5	Thursday	February	10:00–12:00
Printmaking: Explore & Develop Your Artistic Style	20	10	Thursday	April	10:00–12:00

Apply on our website by searching 'SkillUp' or email info@iwcollege.ac.uk

LIFE SKILLS

Boost your capabilities with our SkillUp life skills courses. From "Preparation for Further Learning - Academic Writing" to enhance your scholarly abilities, to "Engaging and/or Building Confidence - Introduction to Spanish" for language skills that also boost self-assurance.

For parents and carers, we offer support through "Equipping Parent/Carers to Support Children's Learning" in areas like English Homework and SATS preparation. Additionally, improve your financial literacy with "Improving Essential Skills - Household Budgeting." These courses are designed to equip you with the necessary skills for personal and professional growth.

SkillUp	Hours	Weeks	Day	Start	Time
Preparation for Further Learning - Academic Writing	12	4	Tuesday	June	10:00-13:00
Engaging and/or Building confidence - Introduction to Spanish	12	4	Thursday	June	10:00-13:00
Equipping Parent/Carers to Support Children's Learning - English Homework	12	4	Thursday	June	10:00-13:00
Equipping Parent/Carers to Support Children's Learning - SATS	9	3	Wednesday	June	10:00-13:00
Improving Essential Skills - Household Budgeting	3	1	Thursday	June	10:00-13:00

Apply on our website by searching 'SkillUp' or email info@iwcollege.ac.uk

MOTOR VEHICLE & CONSTRUCTION SKILLS

Enhance your practical skills with SkillUp courses covering a broad range of topics. From mastering basic to advanced plastering and tiling techniques, to developing intermediate carpentry and all-year horticulture skills.

Dive into painting and decorating, from beginners' essentials to specialised interiors. Gain crucial car maintenance skills including wheel changes, oil and filter changes, and brake pad replacements and more...



SkillUp	Hours	Weeks	Day	Start	Time
Plastering Essentials: Get Started with Confidence	12	1	Wednesday & Thursday	February	10:00- 17:00
Perfect Your Plastering: Intermediate Skills Workshop	12	1	Wednesday & Thursday	April	10:00- 17:00
Tiling Basics: From Prep to Perfection	10	5	Thursday	February	18:00- 20:00
Tiling Masterclass: Advanced Techniques	10	5	Thursday	April	18:00- 20:00
Carpentry intermediate	22	11	Wednesday	February	18:00- 20:00
Grow Your Own: Practical Horticulture for All Season	14	7	Wednesday	May	18:00- 20:00

MOTOR VEHICLE & CONSTRUCTION SKILLS COURSES, DATES AND TIMES

SkillUp	Hours	Weeks	Day	Start	Time
Painting master class interiors and set design	20	10	Thursday	April	18:00-20:00
Painting & Decorating Essentials: A Beginner's Guide	10	5	Thursday	February	18:00-20:00
Flat to Fixed: Car Wheel Changing for Beginners	2	2	Wednesday	February	18:00-20:00
Basic Car Servicing: Oil and Filter Changes Made Easy	2	2	Wednesday	May	18:00-20:00
Keep Your Car Powered: Battery Maintenance and Replacement	2	2	Wednesday	March	18:00-20:00
Brake Basics: Understanding and Replacing Brake Pads	2	2	Wednesday	March	18:00-20:00
A Practical Guide to Soldering Copper Pipes	6	3	Thursday	February	18:00-20:00
DIY Plumbing Basics: Fitting an Outside Tap	2	1	Wednesday	March	18:00-20:00
Heating Essentials: Fitting, Draining & Refilling Radiators	6	3	Wednesday	March	18:00-20:00
Hot Water Mastery: Understanding Unvented Systems	8	4	Thursday	February	18:00-20:00

MOTOR VEHICLE & CONSTRUCTION SKILLS

COURSES, DATES AND TIMES

SkillUp	Hours	Weeks	Day	Start	Time
Green Plumbing: Rainwater Collection & Recycling Systems	10	5	Thursday	April	18:00-20:00

PRACTICAL SKILLS AND SUSTAINABILITY TRAINING

PROFESSIONAL QUALIFICATIONS

COURSES, DATES AND TIMES

SkillUp	Hours	Weeks	Day	Start	Time
C&G Award in fire door safety	16	8	Thursday	April	18:00-20:00
Air source heat pumps awareness	18	9	Thursday	June	18:00-20:00
Awareness of Environmental technology systems	10	5	Wednesday	May	18:00-20:00
Heat pump systems	20	10	Wednesday	April	18:00-20:00
Solar Thermal	18	9	Thursday	April	18:00-20:00
Award in EV systems	10	5	Thursday	April	18:00-20:00
Award EV awareness	6	3	Wednesday	April	18:00-20:00

Apply on our website by searching 'SkillUp' or email info@iwcollege.ac.uk

PROFESSIONAL/SHORT COURSES

COURSES, DATES, TIMES & COSTS

Professional Short Course	Month	Length	Cost
Foundation Excel	January	1 day (9.00 - 16.00)	£95.00
Personal Licence	February	1 day (9.00 - 16.00)	£165.00
Food Allergens Level 2 NEW	February	1 day (9.00 - 17.00)	£105.00
Food Safety Level 2	February	1 day (9.00 - 16.00)	£105.00
Abrasive Wheels	February	1/2 day	£95
Pasma	February	1 day (9.00 to 17.00)	£3,600 (Bespoke)
Advanced Word	February	1 day (9.00 - 16.00)	£95.00
Intermediate Excel	January	1 day (9.00 - 16.30)	£95.00
Advanced Excel	February	1 day (9.00 - 16.30)	£100.00
Train the Trainer	March	1 day	£180.00
Beginners Digital Skills	Bespoke	10 half days (09:00-12:00)	£90.00
Beginners French	January	8 evenings (18.00 - 20.00)	POA*
Beginners Spanish	March	6 evenings (18.00 - 19.30)	£180
Project Management and Implementation	March	4 days (9am - 16:30)	£210
An Improved Equipment Reliability Strategy	March	4 days (6 hours per day)	£210
Business Improvement Techniques NEW	March	4 days (6 hours per day)	£210

Additional courses on request include a variety of options such as:

CMI Management Level 5, Customer Service Sector-Based Work Academy Programme, Welding and Manual Handling, and Retirement Planning.

Courses in the hospitality sector are also available.

For those in construction, the IOSH Health, Safety, and Environment for Construction Workers course is offered. There is also an Award in Special Dietary Requirements available, alongside a Health and Social Care Bootcamp.

For those looking to enhance their basic skills, courses in Multiplying Numeracy Skills and Event Planning are also available.

For more details or to book a place, please call (01983) 550639, email: shortcourses@iwcollege.ac.uk or book online using the QR code at the top of this page.

ONLINE LEARNING

Enhance your professional portfolio with our SkillUp courses, designed to refine existing talents, introduce new skills, or ignite a new interest. Whether you're returning to the workforce or shifting your career path, our diverse offerings cover a range of practical and creative fields.

Dive into Plumbing, Motor Vehicle Skills, Budgeting, Heating Essentials, and Plastering for hands-on expertise. Explore Sustainable Subjects to adapt to eco-friendly practices, or delve into the creative realms of Interior Design and Spanish. These courses are perfect for those looking to start anew or advance in a chosen career, combining enjoyment with essential skill development.

ONLINE LEARNING

FREE* LEVEL 2 CERTIFICATE QUALIFICATION COURSES FOR ADULTS OVER 19*

Online learning offers a flexible, accessible way to acquire new skills or deepen existing knowledge, enabling learners to study from anywhere.

To apply or find out more, visit our website:
iwcollege.ac.uk or email info@iwcollege.ac.uk



ONLINE LEARNING - LEVEL 2 AWARD
Award Prevention & Control of Infection

ONLINE LEARNING - LEVEL 2 CERTIFICATE
Allergy Awareness
Autism
Behaviour that Challenges
Bullying Awareness
Caring for the Elderly
Care Planning
Childhood Illness
Children - Behaviour that Challenges
Common Health
Control Infection
Counselling Skills

ONLINE LEARNING

COURSE OPTIONS AND INFORMATION

ONLINE LEARNING - LEVEL 2 CERTIFICATE
Dementia Care
Diabetes
Dignity & Safeguarding
Equality & Diversity
End of Life Care
Falls Prevention
Information Advice & Guidance
Lean Management
Learning Disabilities
Medication
Mental Health
PRINC of Customer Service
Principles of Business Admin
Safeguarding, Prevent & British Values
Self Harm Suicide Awareness & Prevention
Special Education Needs & Disability
Specific Learning Difficulties
Team Leading
Understanding Mental Health 1st Aid/Advocacy
Understanding Nutrition & Health
Young Peoples Mental Health

WHAT'S ON CAMPUS?

DIGITAL SUITES, LRC, SALON, RESTAURANT, GYM & MORE

As a student, you can experience our state-of-the-art, discounted campus facilities. Guided by industry professionals and their students, you can access a variety of treatments and dining options at student-friendly prices. Simply scan the QR codes below to book your appointment or meal today!



Hair Salons

Our Hair Salons offer a wide range of treatments to students and the general public.



Beauty Salons

Our beauty students offer the opportunity for you to book for many different beauty treatments.



Restaurant

Enjoy a fantastic meal in a friendly and relaxed atmosphere.



Gym

Our state-of-the-art gym provides premium facilities & equipment for optimal fitness experiences.

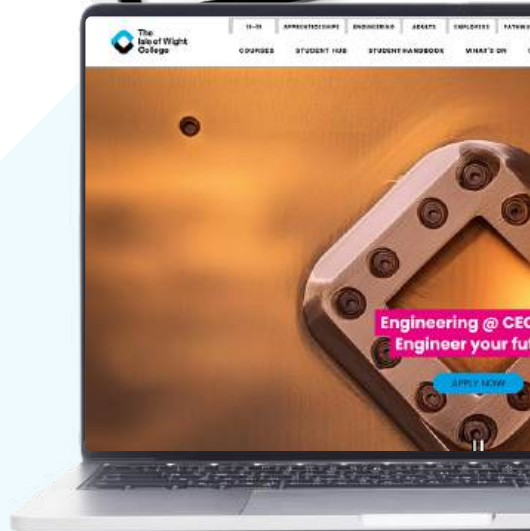
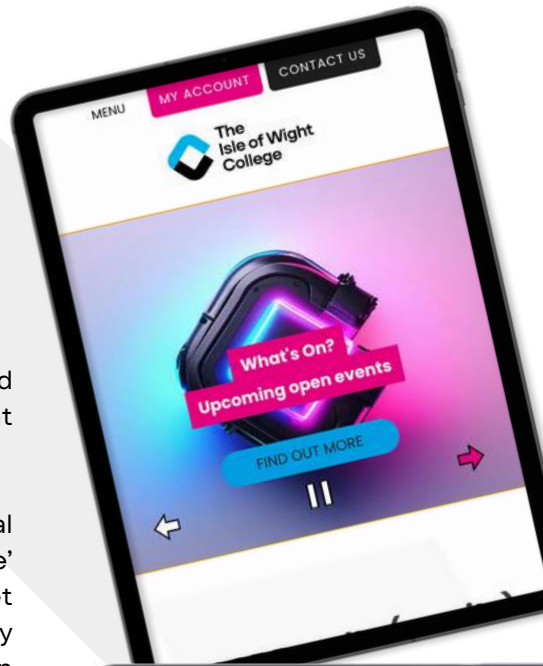


HOW TO APPLY

APPLYING TO STUDY AT THE ISLE OF WIGHT COLLEGE IS AS EASY AS 1,2,3...

- 1** Research course areas and specific levels of study online at iwcollege.ac.uk.
- 2** For paid-for professional qualifications, click 'Book a Course' to add your course to the basket and check-out. For all other study types please click 'Apply Now' on your chosen course page.
- 3** You will then receive an acknowledgement email from us. When your application has been fully processed, we will invite you to attend a scheduled session to discuss the course details and assess your suitability for the course and level.

This may involve group discussions and/or completing a small task and 1:1 discussions with area tutors.



MORE INFORMATION ABOUT HOW TO APPLY >





SOUTH COAST

I N S T I T U T E O F
T E C H N O L O G Y

SOUTH
COAST
IoT

IS
HERE

The South Coast Institute of Technology focuses on delivering industry-driven courses to address skills gaps and contribute to the economic growth of the South Coast.

Tailor-made courses are available at various levels within the Maritime, Engineering, and Digital sectors. These courses provide individuals with the opportunity to progress and thrive in their chosen career pathways.

We firmly believe in the importance of lifelong learning for a successful and fulfilling career. Visit our website to explore more about these innovative courses.

Look out for course areas marked with the IOT logo in this booklet and visit iwcollege.ac.uk to find out about them in more detail.